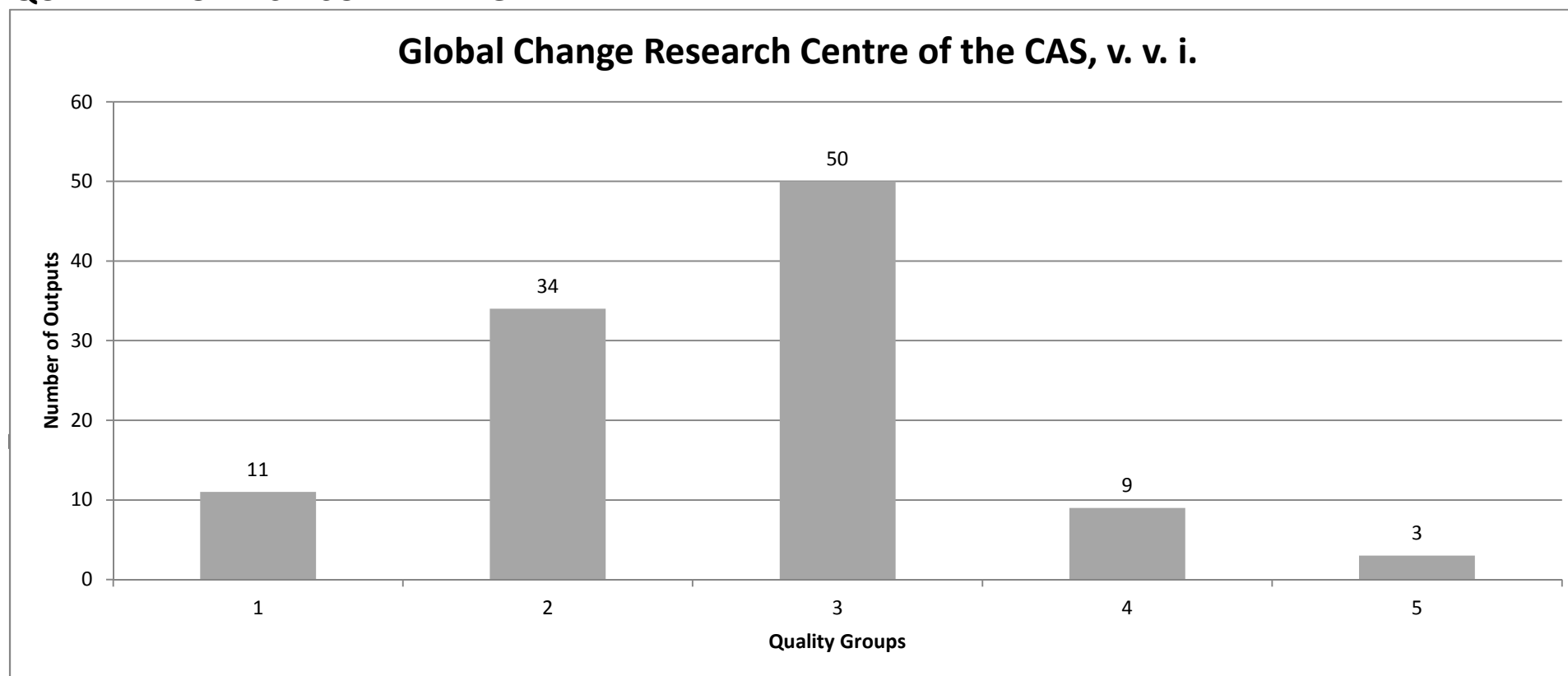


QUALITY PROFILES - SUMMARY GRAPH



Quality Groups:

(1): Quality that is **world-leading** in terms of originality, significance and rigour.

(2): Quality that is **internationally excellent** in terms of originality, significance and rigour but which falls short of the highest standards of excellence.

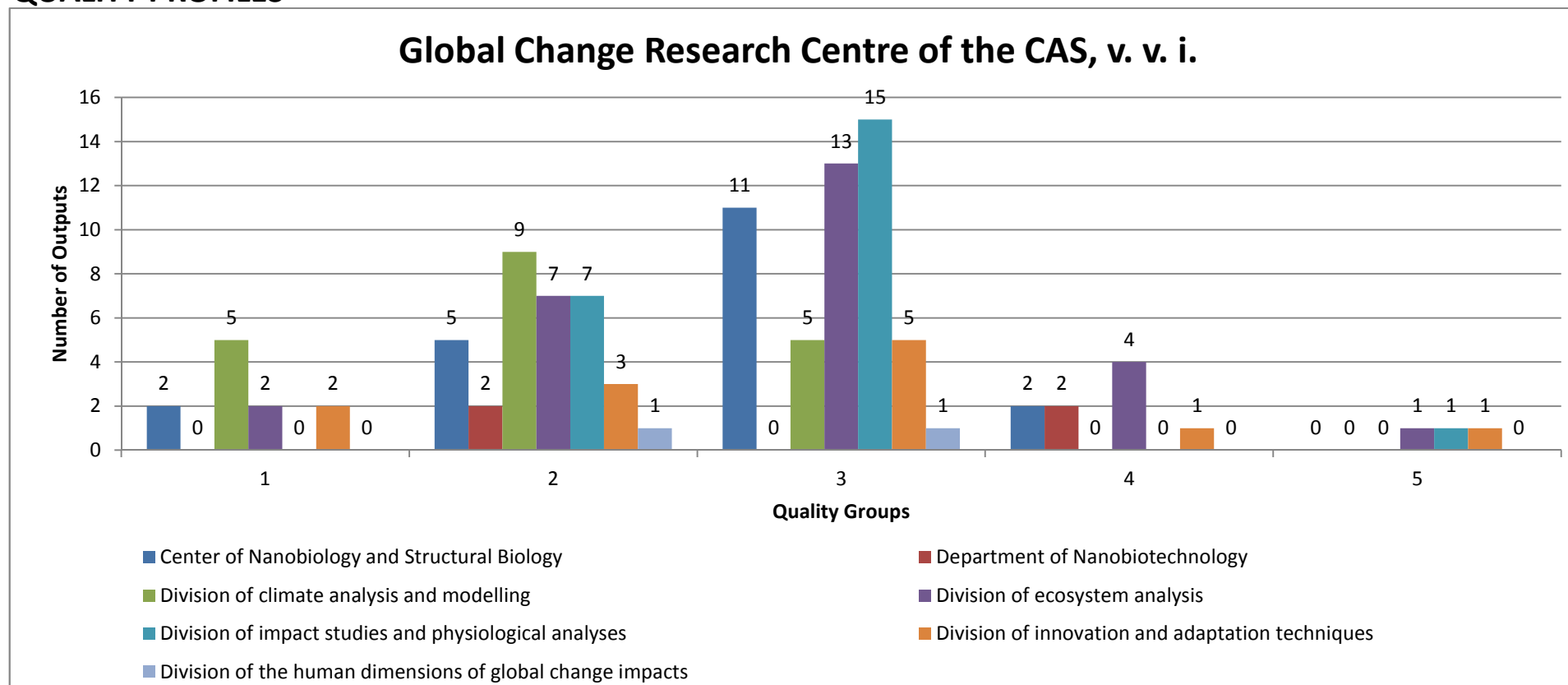
(3): Quality that is **recognized internationally** in terms of originality, significance and rigour.

(4): Quality that is **recognized nationally** in terms of originality, significance and rigour.

(5): Quality that falls **below the standard** of nationally recognized work. Or work which does not meet the published definition of research for the purposes of this assessment.

This plot is presented as an aggregate of data from the Phase I of evaluation for convenience of evaluators in the Phase II.

QUALITY PROFILES



Quality Groups:

(1): Quality that is **world-leading** in terms of originality, significance and rigour.

(2): Quality that is **internationally excellent** in terms of originality, significance and rigour but which falls short of the highest standards of excellence.

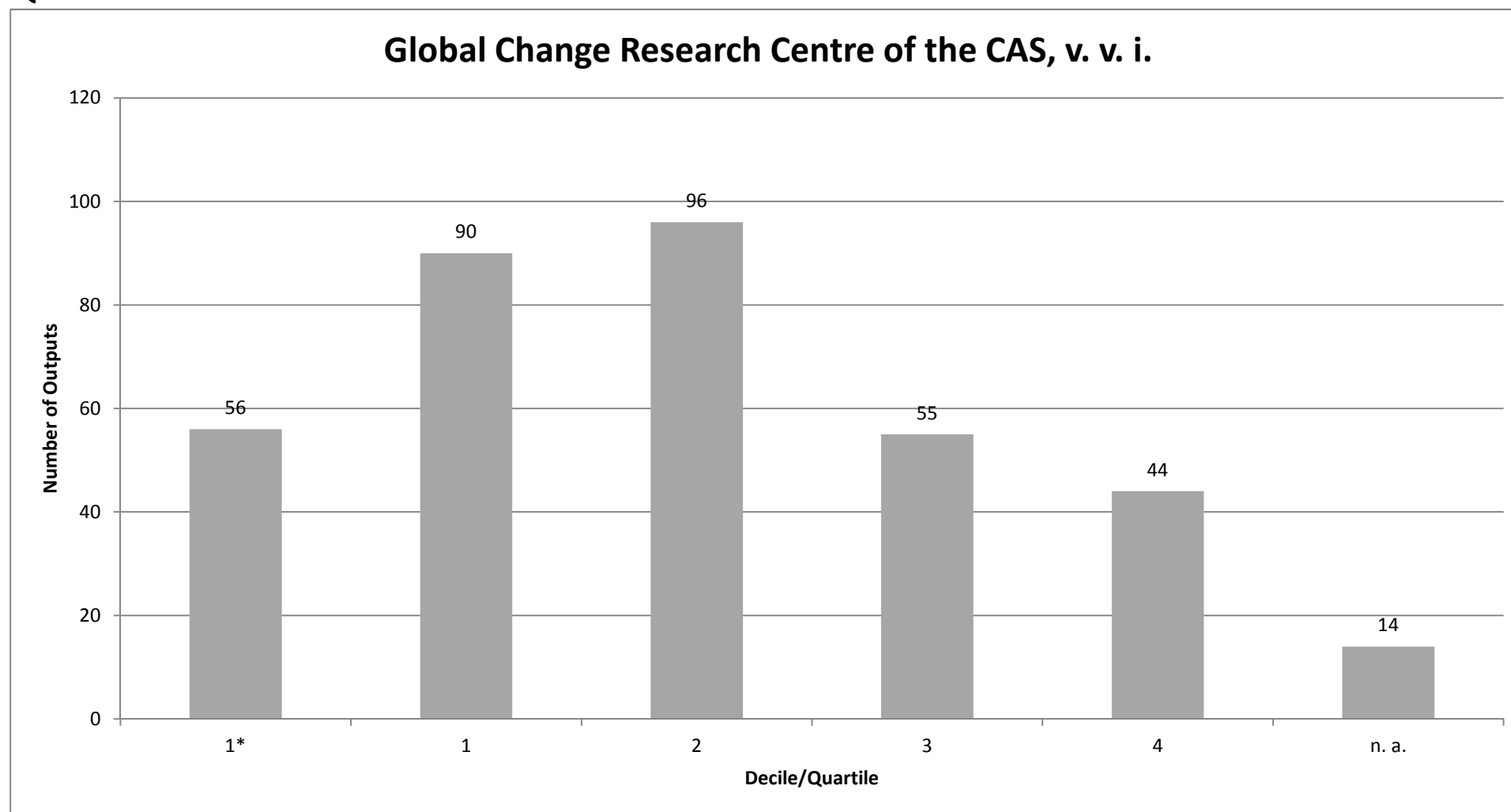
(3): Quality that is **recognized internationally** in terms of originality, significance and rigour.

(4): Quality that is **recognized nationally** in terms of originality, significance and rigour.

(5): Quality that falls **below the standard** of nationally recognized work. Or work which does not meet the published definition of research for the purposes of this assessment.

This plot is presented as an aggregate of data from the Phase I of evaluation for convenience of evaluators in the Phase II; the columns represent outputs (not productivity) and cannot be directly compared each other.

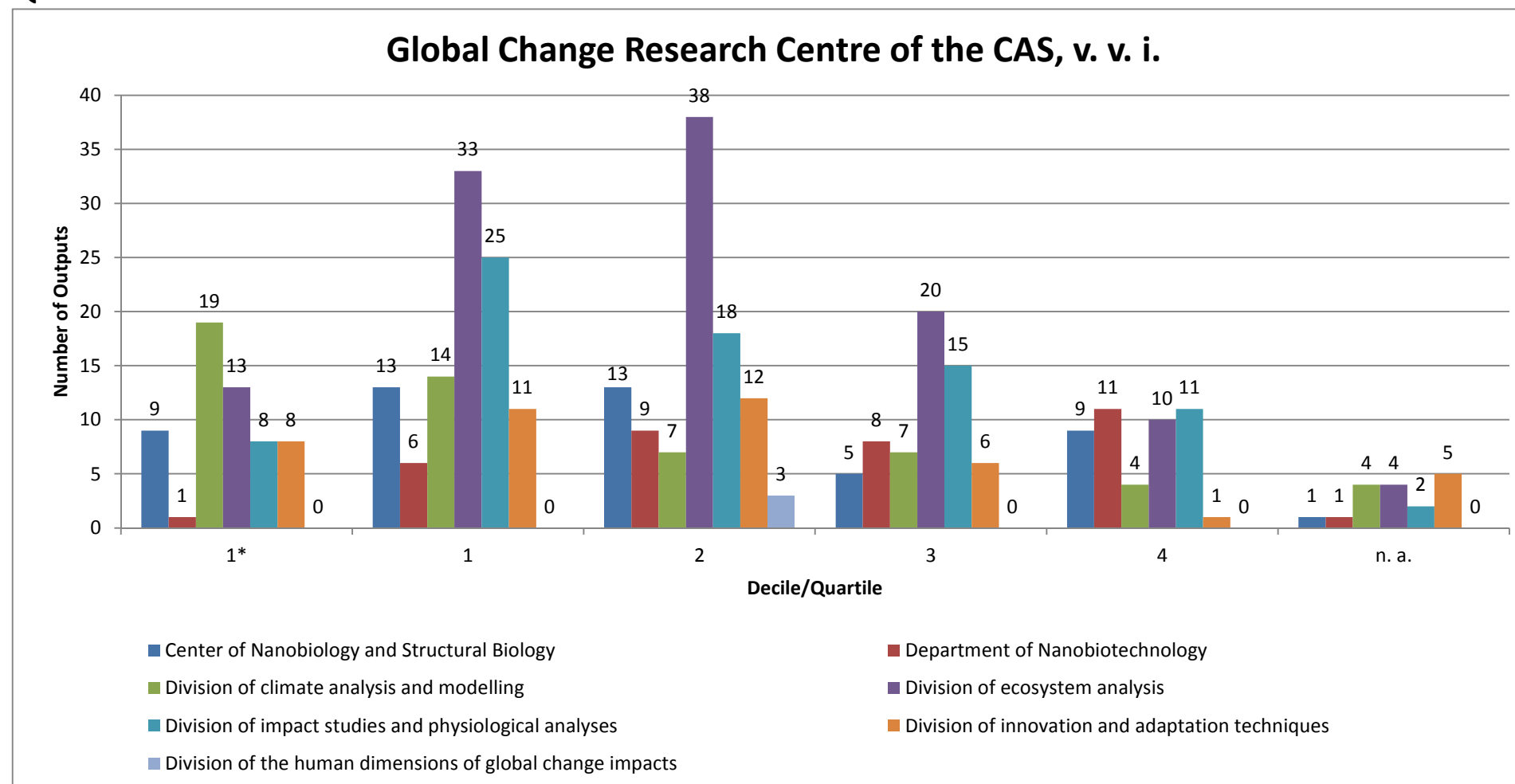
QUALITY OF OUTPUTS BY JOURNALS - SUMMARY GRAPH



Number of outputs in top decile (1*) and quartiles (1-4) by AIS of journals; n. a. - outputs in journals without AIS; if the output is assigned to more than one field, the mean value of quartile is taken (values from 0,1 to 0,5 rounded down).

This plot is presented as an aggregate of bibliometric data for convenience of evaluators.

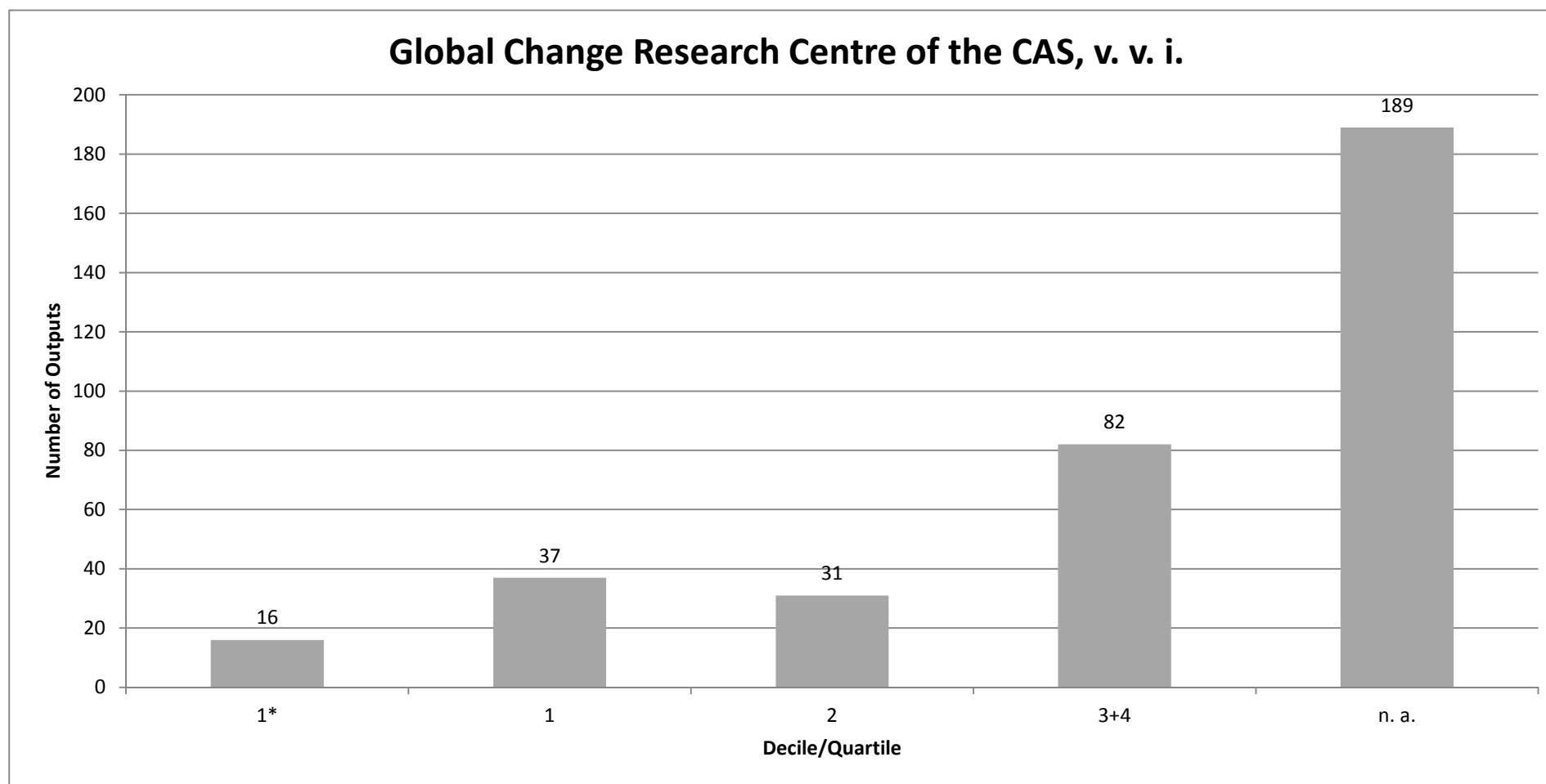
QUALITY OF OUTPUTS BY JOURNALS



Number of outputs in top decile (1*) and quartiles (1-4) by AIS of journals; n. a. - outputs in journals without AIS; if the output is assigned to more than one field, the mean value of quartile is taken (values from 0,1 to 0,5 rounded down).

This plot is presented as an aggregate of bibliometric data for convenience of evaluators; the columns represent outputs (not productivity) and cannot be directly compared each other.

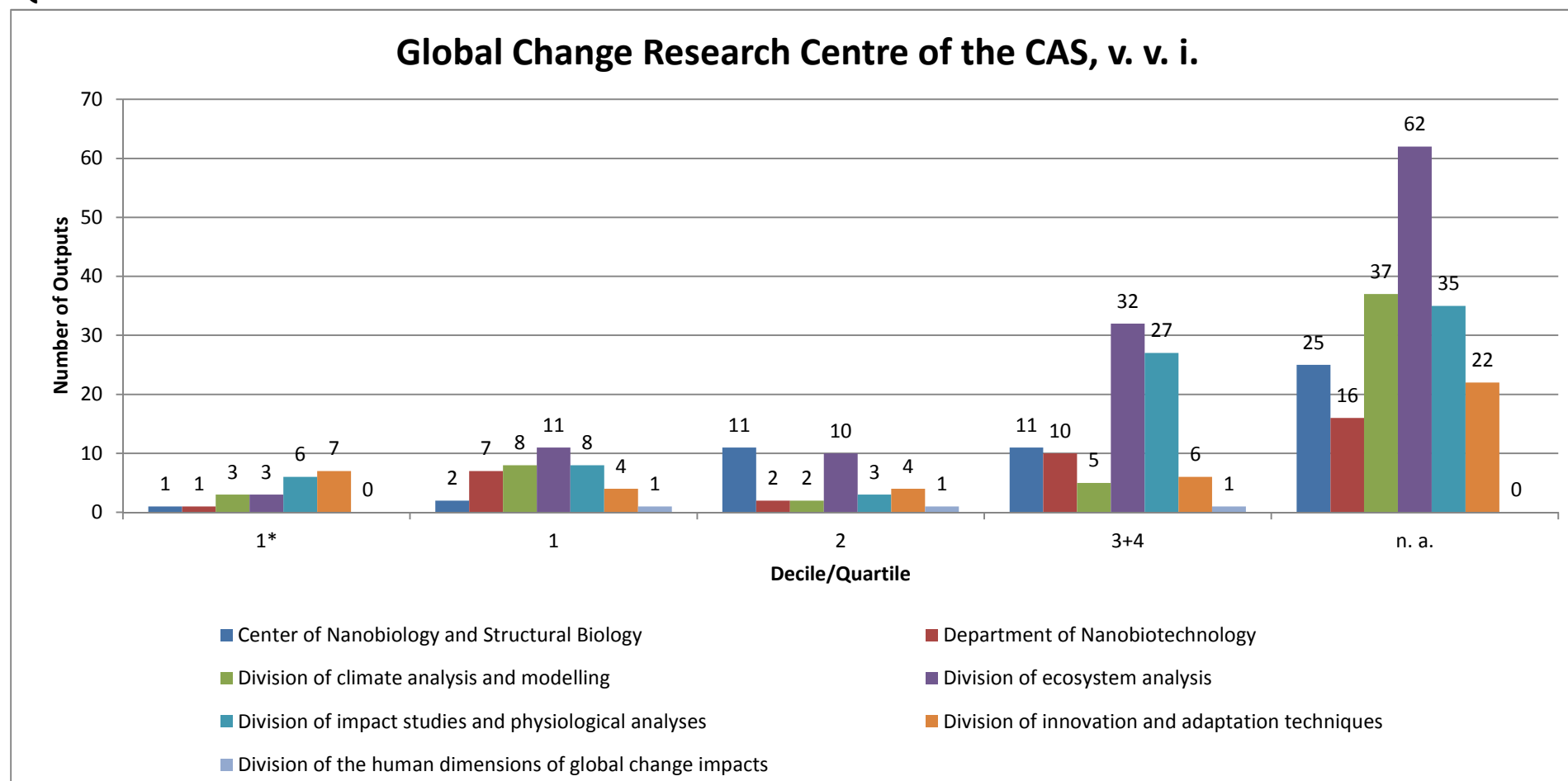
QUALITY OF OUTPUTS BY INTENSITY OF CITATIONS - SUMMARY GRAPH



Number of outputs in the top decile (1*) and in quartiles (1, 2, 3+4) of the list of outputs ordered by the number of citations; n. a. - the number of outputs in the field is low and/or the number of citations is not sufficient for relevant judgement; if the output is assigned to more than one field, the mean value of quartile is taken (values from 0,1 to 0,5 rounded down).

This plot is presented as an aggregate of bibliometric data for convenience of evaluators.

QUALITY OF OUTPUTS BY INTENSITY OF CITATIONS



Number of outputs in the top decile (1*) and in quartiles (1, 2, 3+4) of the list of outputs ordered by the number of citations; n. a. - the number of outputs in the field is low and/or the number of citations is not sufficient for relevant judgement; if the output is assigned to more than one field, the mean value of quartile is taken (values from 0,1 to 0,5 rounded down).

This plot is presented as an aggregate of bibliometric data for convenience of evaluators; the columns represent outputs (not productivity) and cannot be directly compared each other.

Evaluation of the Research and Professional Activities of the Institutes of the Czech Academy of Sciences for 2010–2014

RESULTS OF THE PHASE I. AND BIBLIOMETRIC PARAMETERS

Institute: Global Change Research Centre of the CAS, v. v. i.

Team: Division of climate analysis and modelling

Head: Farda, Aleš, RNDr., Ph.D.

Total number of outputs : 112 **Evaluated outputs :** 19 (0) **Outputs for bibliometry :** 55 **Large collaborations outputs:** 1

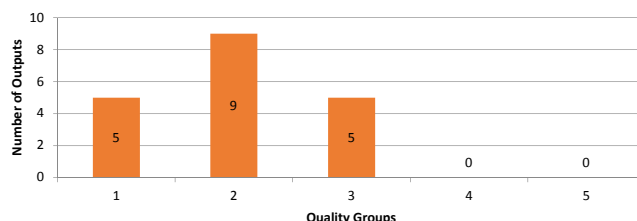
Quality Groups of Outputs (Results of the Phase I.)

Quality	1	2	3	4	5
Outputs	5	9	5	0	0

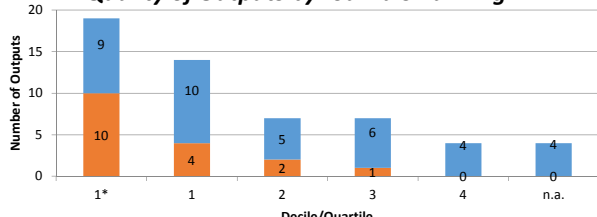
Quality Groups:

- (1): Quality that is **world-leading** in terms of originality, significance and rigour.
 (2): Quality that is **internationally excellent** in terms of originality, significance and rigour but which falls short of the highest standards of excellence.
 (3): Quality that is **recognized internationally** in terms of originality, significance and rigour.
 (4): Quality that is **recognized nationally** in terms of originality, significance and rigour.
 (5): Quality that falls **below the standard** of nationally recognized work. Or work which does not meet the published definition of research for the purposes of this assessment.

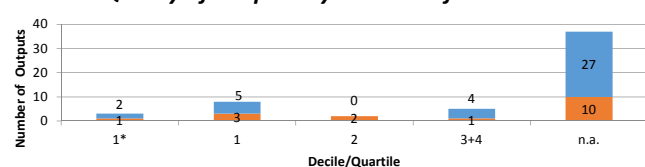
Quality Profile



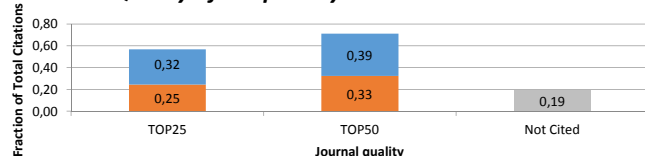
Quality of Outputs by Journals Ranking



Quality of Outputs by Number of Citations



Quality of Outputs by Citation Sources



Field Structure of Outputs

Field Structure of Outputs	Outputs
METEOROLOGY & ATMOSPHERIC SCIENCES	10
ENVIRONMENTAL SCIENCES	8
AGRONOMY	7
AGRICULTURE, MULTIDISCIPLINARY	5
GEOSCIENCES, MULTIDISCIPLINARY	4
ECOLOGY	3
PLANT SCIENCES	2
BIODIVERSITY CONSERVATION	2
MULTIDISCIPLINARY SCIENCES	2
WATER RESOURCES	2
GEOGRAPHY	2
GEOGRAPHY, PHYSICAL	2
GEOCHEMISTRY & GEOPHYSICS	1
FOOD SCIENCE & TECHNOLOGY	1
SOIL SCIENCE	1
BIOLOGY	1
ENTOMOLOGY	1
FORESTRY	1

Total number of outputs: selected types of outputs published in 2010-2014 and registered in the institutional research information system: journal article, monograph, monograph chapter, proceedings paper, patent, utility model, industrial design, prototype, functional specimen, norms and directives, specialized map, realized certified methodology, software, pilot plant, verified technology, plant breed/variety.

Evaluated outputs: outputs submitted by the team and evaluated in the Phase I (value in the brackets shows number of outputs submitted by the team but not evaluated in the Phase I).

Outputs for bibliometry: publications in 2010-2014 registered in the Web of Science; document type: article, review or proceedings paper; large collaborations outputs are also included.

Large collaborations outputs: publications in 2010-2014 with more than 30 authors registered in the Web of Science; document type: article, review or proceedings paper.

Quality Profile: number of evaluated outputs vs quality groups (5 groups); 'world-leading' quality denotes an absolute standard of quality in each field and subfield; 'world leading', 'internationally' and 'nationally' in this context refer to quality standards; they do not refer to the nature or geographical scope of particular subjects, nor to the focus of research nor its place of dissemination; for example, research which is focused on the subject specific to the Czech Republic might be of 'world leading' standard, on the contrary, work with an international focus might not be of 'world leading, internationally excellent or internationally recognized' standard.

Quality of Outputs by Journals Ranking: number of outputs in top decile (1*) and quartiles (1-4) by AIS of journals; n. a. - outputs in journals without AIS; if the output is assigned to more than one field, the mean value of quartile is taken (values from 0,1 to 0,5 rounded down); orange: outputs submitted by the team to the Evaluation, blue: other outputs by the team.

Quality of Outputs by Number of Citations: number of outputs in the top decile (1*) and in quartiles (1, 2, 3+4) of the list of outputs ordered by the number of citations; n. a. - the number of outputs in the field is low and/or the number of citations is not sufficient for relevant judgement; if the output is assigned to more than one field, the mean value of quartile is taken (values from 0,1 to 0,5 rounded down); orange: outputs submitted by the team to the Evaluation, blue: other outputs by the team.

Quality of Outputs by Citation Sources: fraction of citations of all outputs in the top quartile (TOP25) or the top half (TOP50) of list of journals ordered by AIS; fraction of "not cited" outputs is added; orange: outputs submitted by the team to the Evaluation, blue: other outputs by the team.

Field Structure of Outputs: number of outputs of the team in different fields; if the output is assigned to more than one field, the field where the publication performs best (assessed by Quality of Outputs by Journals Ranking) is taken; the table shows up to 30 fields.

Evaluation of the Research and Professional Activities of the Institutes of the Czech Academy of Sciences for 2010–2014

RESULTS OF THE PHASE I. AND BIBLIOMETRIC PARAMETERS

Institute: Global Change Research Centre of the CAS, v. v. i.

Team: Division of ecosystem analysis

Head: Dvorská, Alice

Total number of outputs : 222

Evaluated outputs : 27 (0)

Outputs for bibliometry : 118

Large collaborations outputs: 1

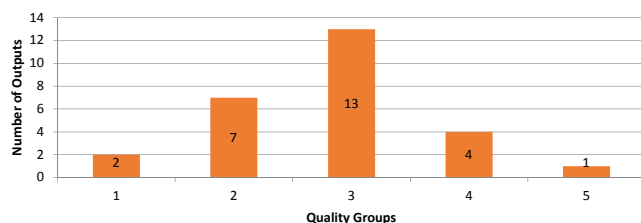
Quality Groups of Outputs (Results of the Phase I.)

Quality	1	2	3	4	5
Outputs	2	7	13	4	1

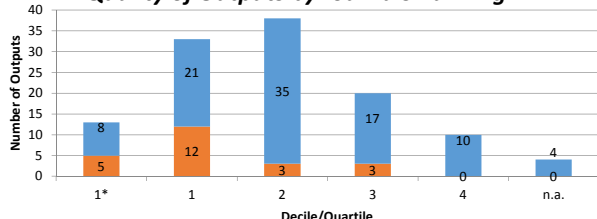
Quality Groups:

- (1): Quality that is **world-leading** in terms of originality, significance and rigour.
 (2): Quality that is **internationally excellent** in terms of originality, significance and rigour but which falls short of the highest standards of excellence.
 (3): Quality that is **recognized internationally** in terms of originality, significance and rigour.
 (4): Quality that is **recognized nationally** in terms of originality, significance and rigour.
 (5): Quality that falls **below the standard** of nationally recognized work. Or work which does not meet the published definition of research for the purposes of this assessment.

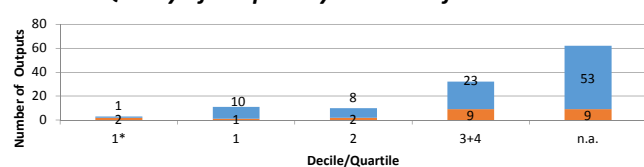
Quality Profile



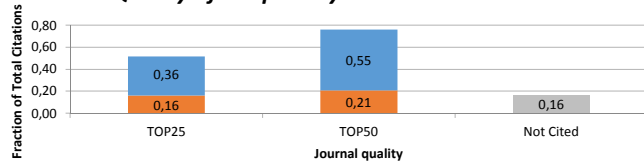
Quality of Outputs by Journals Ranking



Quality of Outputs by Number of Citations



Quality of Outputs by Citation Sources



Field Structure of Outputs

Field Structure of Outputs	Outputs
ENVIRONMENTAL SCIENCES	17
ENTOMOLOGY	16
FORESTRY	11
ECOLOGY	10
AGRONOMY	10
PLANT SCIENCES	8
BIODIVERSITY CONSERVATION	8
SOIL SCIENCE	4
ZOOLOGY	4
WATER RESOURCES	3
MARINE & FRESHWATER BIOLOGY	3
GEOSCIENCES, MULTIDISCIPLINARY	3
BIOLOGY	2
BIOTECHNOLOGY & APPLIED MICROBIOLOGY	2
ENGINEERING, ENVIRONMENTAL	2
CHEMISTRY, MULTIDISCIPLINARY	2
INSTRUMENTS & INSTRUMENTATION	2
AGRICULTURE, MULTIDISCIPLINARY	2
INTEGRATIVE & COMPLEMENTARY MEDICINE	1
FISHERIES	1
MYCOLOGY	1
LIMNOLOGY	1
FOOD SCIENCE & TECHNOLOGY	1
ENGINEERING, CHEMICAL	1
MULTIDISCIPLINARY SCIENCES	1
GEOCHEMISTRY & GEOPHYSICS	1
GEOGRAPHY	1

Total number of outputs: selected types of outputs published in 2010-2014 and registered in the institutional research information system: journal article, monograph, monograph chapter, proceedings paper, patent, utility model, industrial design, prototype, functional specimen, norms and directives, specialized map, realized certified methodology, software, pilot plant, verified technology, plant breed/variety.

Evaluated outputs: outputs submitted by the team and evaluated in the Phase I (value in the brackets shows number of outputs submitted by the team but not evaluated in the Phase I).

Outputs for bibliometry: publications in 2010-2014 registered in the Web of Science; document type: article, review or proceedings paper; large collaborations outputs are also included.

Large collaborations outputs: publications in 2010-2014 with more than 30 authors registered in the Web of Science; document type: article, review or proceedings paper.

Quality Profile: number of evaluated outputs vs quality groups (5 groups); 'world-leading' quality denotes an absolute standard of quality in each field and subfield; 'world leading', 'internationally' and 'nationally' in this context refer to quality standards; they do not refer to the nature or geographical scope of particular subjects, nor to the focus of research nor its place of dissemination; for example, research which is focused on the subject specific to the Czech Republic might be of 'world leading' standard, on the contrary, work with an international focus might not be of 'world leading, internationally excellent or internationally recognized' standard.

Quality of Outputs by Journals Ranking: number of outputs in top decile (1*) and quartiles (1-4) by AIS of journals; n. a. - outputs in journals without AIS; if the output is assigned to more than one field, the mean value of quartile is taken (values from 0,1 to 0,5 rounded down); orange: outputs submitted by the team to the Evaluation, blue: other outputs by the team.

Quality of Outputs by Number of Citations: number of outputs in the top decile (1*) and in quartiles (1, 2, 3+4) of the list of outputs ordered by the number of citations; n. a. - the number of outputs in the field is low and/or the number of citations is not sufficient for relevant judgement; if the output is assigned to more than one field, the mean value of quartile is taken (values from 0,1 to 0,5 rounded down); orange: outputs submitted by the team to the Evaluation, blue: other outputs by the team.

Quality of Outputs by Citation Sources: fraction of citations of all outputs in the top quartile (TOP25) or the top half (TOP50) of list of journals ordered by AIS; fraction of "not cited" outputs is added; orange: outputs submitted by the team to the Evaluation, blue: other outputs by the team.

Field Structure of Outputs: number of outputs of the team in different fields; if the output is assigned to more than one field, the field where the publication performs best (assessed by Quality of Outputs by Journals Ranking) is taken; the table shows up to 30 fields.

Evaluation of the Research and Professional Activities of the Institutes of the Czech Academy of Sciences for 2010–2014

RESULTS OF THE PHASE I. AND BIBLIOMETRIC PARAMETERS

Institute: Global Change Research Centre of the CAS, v. v. i.

Team: Division of impact studies and physiological analyses

Head: Šprtová, Miroslava, Mgr., Ph.D.

Total number of outputs : 140

Evaluated outputs : 23 (0)

Outputs for bibliometry : 79

Large collaborations outputs: 2

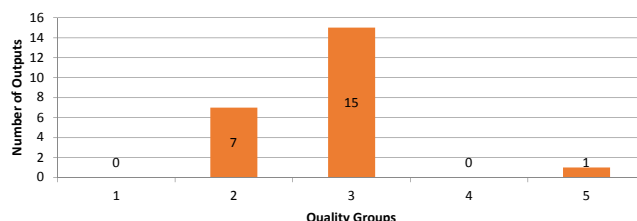
Quality Groups of Outputs (Results of the Phase I.)

Quality	1	2	3	4	5
Outputs	0	7	15	0	1

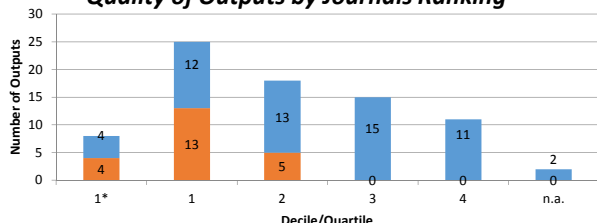
Quality Groups:

- (1): Quality that is **world-leading** in terms of originality, significance and rigour.
 (2): Quality that is **internationally excellent** in terms of originality, significance and rigour but which falls short of the highest standards of excellence.
 (3): Quality that is **recognized internationally** in terms of originality, significance and rigour.
 (4): Quality that is **recognized nationally** in terms of originality, significance and rigour.
 (5): Quality that falls **below the standard** of nationally recognized work. Or work which does not meet the published definition of research for the purposes of this assessment.

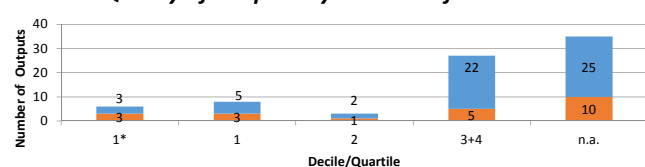
Quality Profile



Quality of Outputs by Journals Ranking



Quality of Outputs by Number of Citations



Quality of Outputs by Citation Sources



Field Structure of Outputs

Field Structure of Outputs	Outputs
PLANT SCIENCES	19
ENVIRONMENTAL SCIENCES	13
AGRONOMY	7
CHEMISTRY, MULTIDISCIPLINARY	7
FOOD SCIENCE & TECHNOLOGY	5
CHEMISTRY, ORGANIC	4
MULTIDISCIPLINARY SCIENCES	3
ECOLOGY	3
FORESTRY	3
CHEMISTRY, ANALYTICAL	3
METEOROLOGY & ATMOSPHERIC SCIENCES	2
PHYSICS, FLUIDS & PLASMAS	1
MICROBIOLOGY	1
CHEMISTRY, APPLIED	1
ENGINEERING, ELECTRICAL & ELECTRONIC	1
ENGINEERING, ENVIRONMENTAL	1
BIOLOGY	1
BIOCHEMICAL RESEARCH METHODS	1
ALLERGY	1
INSTRUMENTS & INSTRUMENTATION	1
MATERIALS SCIENCE, PAPER & WOOD	1

Total number of outputs: selected types of outputs published in 2010-2014 and registered in the institutional research information system: journal article, monograph, monograph chapter, proceedings paper, patent, utility model, industrial design, prototype, functional specimen, norms and directives, specialized map, realized certified methodology, software, pilot plant, verified technology, plant breed/variety.

Evaluated outputs: outputs submitted by the team and evaluated in the Phase I (value in the brackets shows number of outputs submitted by the team but not evaluated in the Phase I).

Outputs for bibliometry: publications in 2010-2014 registered in the Web of Science; document type: article, review or proceedings paper; large collaborations outputs are also included.

Large collaborations outputs: publications in 2010-2014 with more than 30 authors registered in the Web of Science; document type: article, review or proceedings paper.

Quality Profile: number of evaluated outputs vs quality groups (5 groups); 'world-leading' quality denotes an absolute standard of quality in each field and subfield; 'world leading', 'internationally' and 'nationally' in this context refer to quality standards; they do not refer to the nature or geographical scope of particular subjects, nor to the focus of research nor its place of dissemination; for example, research which is focused on the subject specific to the Czech Republic might be of 'world leading' standard, on the contrary, work with an international focus might not be of 'world leading, internationally excellent or internationally recognized' standard.

Quality of Outputs by Journals Ranking: number of outputs in top decile (1*) and quartiles (1-4) by AIS of journals; n. a. - outputs in journals without AIS; if the output is assigned to more than one field, the mean value of quartile is taken (values from 0,1 to 0,5 rounded down); orange: outputs submitted by the team to the Evaluation, blue: other outputs by the team.

Quality of Outputs by Number of Citations: number of outputs in the top decile (1*) and in quartiles (1, 2, 3+4) of the list of outputs ordered by the number of citations; n. a. - the number of outputs in the field is low and/or the number of citations is not sufficient for relevant judgement; if the output is assigned to more than one field, the mean value of quartile is taken (values from 0,1 to 0,5 rounded down); orange: outputs submitted by the team to the Evaluation, blue: other outputs by the team.

Quality of Outputs by Citation Sources: fraction of citations of all outputs in the top quartile (TOP25) or the top half (TOP50) of list of journals ordered by AIS; fraction of "not cited" outputs is added; orange: outputs submitted by the team to the Evaluation, blue: other outputs by the team.

Field Structure of Outputs: number of outputs of the team in different fields; if the output is assigned to more than one field, the field where the publication performs best (assessed by Quality of Outputs by Journals Ranking) is taken; the table shows up to 30 fields.

Evaluation of the Research and Professional Activities of the Institutes of the Czech Academy of Sciences for 2010–2014

RESULTS OF THE PHASE I. AND BIBLIOMETRIC PARAMETERS

Institute: Global Change Research Centre of the CAS, v. v. i.

Team: Division of the human dimensions of global change impacts

Head: Vačkář David, Mgr., Ph.D.

Total number of outputs : 8 **Evaluated outputs :** 2 (0) **Outputs for bibliometry :** 3 **Large collaborations outputs:** 0

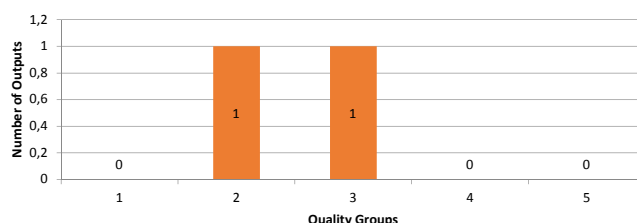
Quality Groups of Outputs (Results of the Phase I.)

Quality	1	2	3	4	5
Outputs	0	1	1	0	0

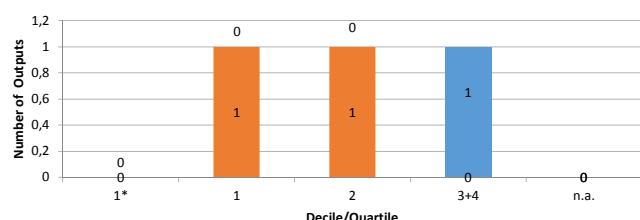
Quality Groups:

- (1): Quality that is **world-leading** in terms of originality, significance and rigour.
 (2): Quality that is **internationally excellent** in terms of originality, significance and rigour but which falls short of the highest standards of excellence.
 (3): Quality that is **recognized internationally** in terms of originality, significance and rigour.
 (4): Quality that is **recognized nationally** in terms of originality, significance and rigour.
 (5): Quality that falls **below the standard** of nationally recognized work. Or work which does not meet the published definition of research for the purposes of this assessment.

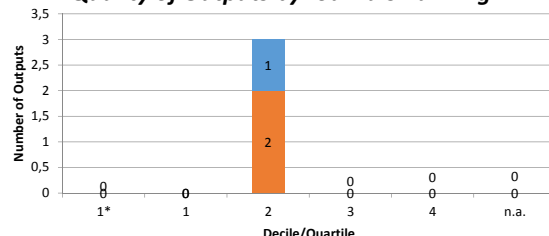
Quality Profile



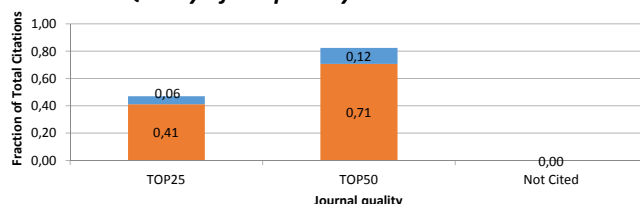
Quality of Outputs by Number of Citations



Quality of Outputs by Journals Ranking



Quality of Outputs by Citation Sources



Field Structure of Outputs

Field Structure of Outputs	Outputs
ENVIRONMENTAL SCIENCES	1
GEOSCIENCES, MULTIDISCIPLINARY	1
ENVIRONMENTAL STUDIES	1

Total number of outputs: selected types of outputs published in 2010-2014 and registered in the institutional research information system: journal article, monograph, monograph chapter, proceedings paper, patent, utility model, industrial design, prototype, functional specimen, norms and directives, specialized map, realized certified methodology, software, pilot plant, verified technology, plant breed/variety.

Evaluated outputs: outputs submitted by the team and evaluated in the Phase I (value in the brackets shows number of outputs submitted by the team but not evaluated in the Phase I).

Outputs for bibliometry: publications in 2010-2014 with less than 30 authors registered in the Web of Science; document type: article, review or proceedings paper.

Large collaborations outputs: publications in 2010-2014 with more than 30 authors registered in the Web of Science; document type: article, review or proceedings paper.

Quality Profile: number of evaluated outputs vs quality groups (5 groups); 'world-leading' quality denotes an absolute standard of quality in each field and subfield; 'world leading', 'internationally' and 'nationally' in this context refer to quality standards; they do not refer to the nature or geographical scope of particular subjects, nor to the focus of research nor its place of dissemination; for example, research which is focused on the subject specific to the Czech Republic might be of 'world leading' standard, on the contrary, work with an international focus might not be of 'world leading, internationally excellent or internationally recognized' standard.

Quality of Outputs by Journals Ranking: number of outputs in top decile (1*) and quartiles (1-4) by AIS of journals; n. a. - outputs in journals without AIS; if the output is assigned to more than one field, the mean value of quartile is taken (values from 0,1 to 0,5 rounded down); orange: outputs submitted by the team to the Evaluation, blue: other outputs by the team.

Quality of Outputs by Number of Citations: number of outputs in the top decile (1*) and in quartiles (1, 2, 3+4) of the list of outputs ordered by the number of citations; n. a. - the number of outputs in the field is low and/or the number of citations is not sufficient for relevant judgement; if the output is assigned to more than one field, the mean value of quartile is taken (values from 0,1 to 0,5 rounded down); orange: outputs submitted by the team to the Evaluation, blue: other outputs by the team.

Quality of Outputs by Citation Sources: fraction of citations of all outputs in the top quartile (TOP25) or the top half (TOP50) of list of journals ordered by AIS; fraction of "not cited" outputs is added; orange: outputs submitted by the team to the Evaluation, blue: other outputs by the team.

Field Structure of Outputs: number of outputs of the team in different fields; if the output is assigned to more than one field, the field where the publication performs best (assessed by Quality of Outputs by Journals Ranking) is taken; the table shows up to 30 fields.

Evaluation of the Research and Professional Activities of the Institutes of the Czech Academy of Sciences for 2010–2014

RESULTS OF THE PHASE I. AND BIBLIOMETRIC PARAMETERS

Institute: Global Change Research Centre of the CAS, v. v. i.

Team: Center of Nanobiology and Structural Biology

Head: Prof. RNDr. Rüdiger Ettrich, Ph.D.

Total number of outputs : 56

Evaluated outputs : 20 (0)

Outputs for bibliometry : 50

Large collaborations outputs: 0

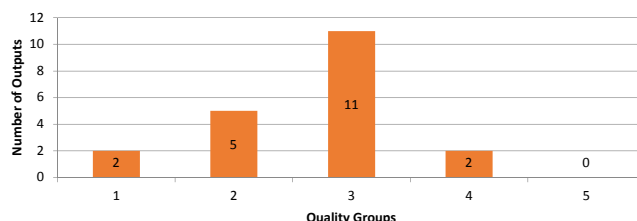
Quality Groups of Outputs (Results of the Phase I.)

Quality	1	2	3	4	5
Outputs	2	5	11	2	0

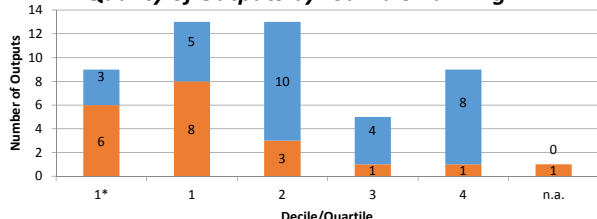
Quality Groups:

- (1): Quality that is **world-leading** in terms of originality, significance and rigour.
 (2): Quality that is **internationally excellent** in terms of originality, significance and rigour but which falls short of the highest standards of excellence.
 (3): Quality that is **recognized internationally** in terms of originality, significance and rigour.
 (4): Quality that is **recognized nationally** in terms of originality, significance and rigour.
 (5): Quality that falls **below the standard** of nationally recognized work. Or work which does not meet the published definition of research for the purposes of this assessment.

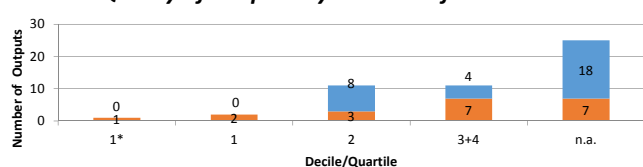
Quality Profile



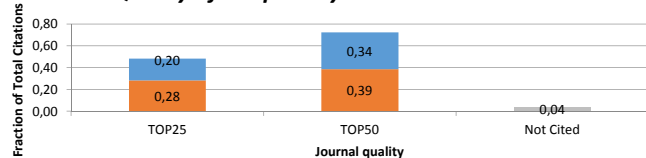
Quality of Outputs by Journals Ranking



Quality of Outputs by Number of Citations



Quality of Outputs by Citation Sources



Field Structure of Outputs

Field Structure of Outputs	Outputs
CRYSTALLOGRAPHY	8
CHEMISTRY, PHYSICAL	7
BIOCHEMISTRY & MOLECULAR BIOLOGY	6
BIOCHEMICAL RESEARCH METHODS	6
CHEMISTRY, MULTIDISCIPLINARY	5
BIOTECHNOLOGY & APPLIED MICROBIOLOGY	2
BIOPHYSICS	2
CHEMISTRY, ORGANIC	2
MULTIDISCIPLINARY SCIENCES	2
PHARMACOLOGY & PHARMACY	2
PLANT SCIENCES	2
COMPUTER SCIENCE, SOFTWARE ENGINEERING	1
METEOROLOGY & ATMOSPHERIC SCIENCES	1
COMPUTER SCIENCE, INTERDISCIPLINARY APPLICATIONS	1
CHEMISTRY, MEDICINAL	1
CHEMISTRY, ANALYTICAL	1
CHEMISTRY, APPLIED	1

Total number of outputs: selected types of outputs published in 2010-2014 and registered in the institutional research information system: journal article, monograph, monograph chapter, proceedings paper, patent, utility model, industrial design, prototype, functional specimen, norms and directives, specialized map, realized certified methodology, software, pilot plant, verified technology, plant breed/variety.

Evaluated outputs: outputs submitted by the team and evaluated in the Phase I (value in the brackets shows number of outputs submitted by the team but not evaluated in the Phase I).

Outputs for bibliometry: publications in 2010-2014 with less than 30 authors registered in the Web of Science; document type: article, review or proceedings paper.

Large collaborations outputs: publications in 2010-2014 with more than 30 authors registered in the Web of Science; document type: article, review or proceedings paper.

Quality Profile: number of evaluated outputs vs quality groups (5 groups); 'world-leading' quality denotes an absolute standard of quality in each field and subfield; 'world leading', 'internationally' and 'nationally' in this context refer to quality standards; they do not refer to the nature or geographical scope of particular subjects, nor to the focus of research nor its place of dissemination; for example, research which is focused on the subject specific to the Czech Republic might be of 'world leading' standard, on the contrary, work with an international focus might not be of 'world leading, internationally excellent or internationally recognized' standard.

Quality of Outputs by Journals Ranking: number of outputs in top decile (1*) and quartiles (1-4) by AIS of journals; n. a. - outputs in journals without AIS; if the output is assigned to more than one field, the mean value of quartile is taken (values from 0,1 to 0,5 rounded down); orange: outputs submitted by the team to the Evaluation, blue: other outputs by the team.

Quality of Outputs by Number of Citations: number of outputs in the top decile (1*) and in quartiles (1, 2, 3+4) of the list of outputs ordered by the number of citations; n. a. - the number of outputs in the field is low and/or the number of citations is not sufficient for relevant judgement; if the output is assigned to more than one field, the mean value of quartile is taken (values from 0,1 to 0,5 rounded down); orange: outputs submitted by the team to the Evaluation, blue: other outputs by the team.

Quality of Outputs by Citation Sources: fraction of citations of all outputs in the top quartile (TOP25) or the top half (TOP50) of list of journals ordered by AIS; fraction of "not cited" outputs is added; orange: outputs submitted by the team to the Evaluation, blue: other outputs by the team.

Field Structure of Outputs: number of outputs of the team in different fields; if the output is assigned to more than one field, the field where the publication performs best (assessed by Quality of Outputs by Journals Ranking) is taken; the table shows up to 30 fields.

Evaluation of the Research and Professional Activities of the Institutes of the Czech Academy of Sciences for 2010–2014

RESULTS OF THE PHASE I. AND BIBLIOMETRIC PARAMETERS

Institute: Global Change Research Centre of the CAS, v. v. i.

Team: Department of Nanobiotechnology

Head: Prof. Ing. Ivo Šafařík, DrSc.

Total number of outputs : 91 **Evaluated outputs :** 4 (0) **Outputs for bibliometry :** 36 **Large collaborations outputs:** 0

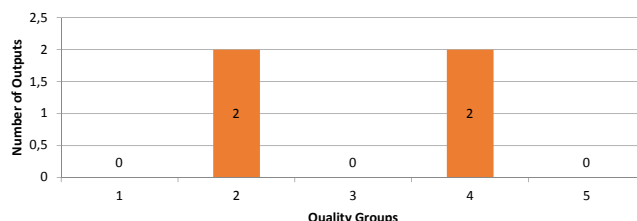
Quality Groups of Outputs (Results of the Phase I.)

Quality	1	2	3	4	5
Outputs	0	2	0	2	0

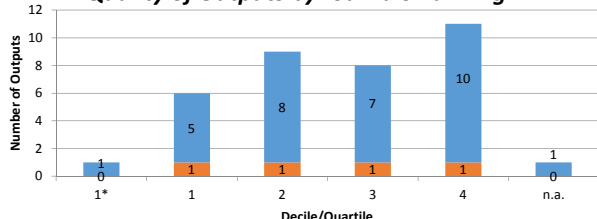
Quality Groups:

- (1): Quality that is **world-leading** in terms of originality, significance and rigour.
 (2): Quality that is **internationally excellent** in terms of originality, significance and rigour but which falls short of the highest standards of excellence.
 (3): Quality that is **recognized internationally** in terms of originality, significance and rigour.
 (4): Quality that is **recognized nationally** in terms of originality, significance and rigour.
 (5): Quality that falls **below the standard** of nationally recognized work. Or work which does not meet the published definition of research for the purposes of this assessment.

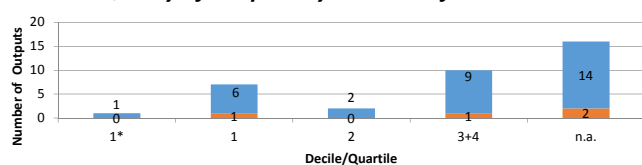
Quality Profile



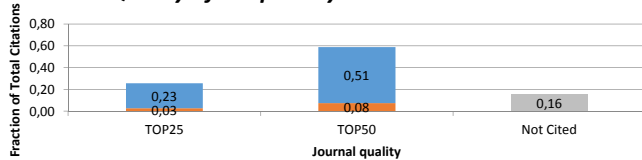
Quality of Outputs by Journals Ranking



Quality of Outputs by Number of Citations



Quality of Outputs by Citation Sources



Field Structure of Outputs

Field Structure of Outputs	Outputs
ENGINEERING, CHEMICAL	4
FOOD SCIENCE & TECHNOLOGY	3
CHEMISTRY, ANALYTICAL	3
AGRONOMY	2
ENVIRONMENTAL SCIENCES	2
CHEMISTRY, MULTIDISCIPLINARY	2
BIOLOGY	2
PHYSICS, FLUIDS & PLASMAS	2
PLANT SCIENCES	2
ECOLOGY	1
ENGINEERING, BIOMEDICAL	1
METALLURGY & METALLURGICAL ENGINEERING	1
BIOCHEMISTRY & MOLECULAR BIOLOGY	1
CHEMISTRY, APPLIED	1
POLYMER SCIENCE	1
MATERIALS SCIENCE, MULTIDISCIPLINARY	1
AGRICULTURE, MULTIDISCIPLINARY	1
PHYSICS, APPLIED	1
BIOPHYSICS	1
BIOTECHNOLOGY & APPLIED MICROBIOLOGY	1
ENGINEERING, ELECTRICAL & ELECTRONIC	1
AGRICULTURE, DAIRY & ANIMAL SCIENCE	1
AGRICULTURAL ENGINEERING	1

Total number of outputs: selected types of outputs published in 2010-2014 and registered in the institutional research information system: journal article, monograph, monograph chapter, proceedings paper, patent, utility model, industrial design, prototype, functional specimen, norms and directives, specialized map, realized certified methodology, software, pilot plant, verified technology, plant breed/variety.

Evaluated outputs: outputs submitted by the team and evaluated in the Phase I (value in the brackets shows number of outputs submitted by the team but not evaluated in the Phase I).

Outputs for bibliometry: publications in 2010-2014 with less than 30 authors registered in the Web of Science; document type: article, review or proceedings paper.

Large collaborations outputs: publications in 2010-2014 with more than 30 authors registered in the Web of Science; document type: article, review or proceedings paper.

Quality Profile: number of evaluated outputs vs quality groups (5 groups); 'world-leading' quality denotes an absolute standard of quality in each field and subfield; 'world leading', 'internationally' and 'nationally' in this context refer to quality standards; they do not refer to the nature or geographical scope of particular subjects, nor to the focus of research nor its place of dissemination; for example, research which is focused on the subject specific to the Czech Republic might be of 'world leading' standard, on the contrary, work with an international focus might not be of 'world leading, internationally excellent or internationally recognized' standard.

Quality of Outputs by Journals Ranking: number of outputs in top decile (1*) and quartiles (1-4) by AIS of journals; n. a. - outputs in journals without AIS; if the output is assigned to more than one field, the mean value of quartile is taken (values from 0,1 to 0,5 rounded down); orange: outputs submitted by the team to the Evaluation, blue: other outputs by the team.

Quality of Outputs by Number of Citations: number of outputs in the top decile (1*) and in quartiles (1, 2, 3+4) of the list of outputs ordered by the number of citations; n. a. - the number of outputs in the field is low and/or the number of citations is not sufficient for relevant judgement; if the output is assigned to more than one field, the mean value of quartile is taken (values from 0,1 to 0,5 rounded down); orange: outputs submitted by the team to the Evaluation, blue: other outputs by the team.

Quality of Outputs by Citation Sources: fraction of citations of all outputs in the top quartile (TOP25) or the top half (TOP50) of list of journals ordered by AIS; fraction of "not cited" outputs is added; orange: outputs submitted by the team to the Evaluation, blue: other outputs by the team.

Field Structure of Outputs: number of outputs of the team in different fields; if the output is assigned to more than one field, the field where the publication performs best (assessed by Quality of Outputs by Journals Ranking) is taken; the table shows up to 30 fields.

Evaluation of the Research and Professional Activities of the Institutes of the Czech Academy of Sciences for 2010–2014

RESULTS OF THE PHASE I. AND BIBLIOMETRIC PARAMETERS

Institute: Global Change Research Centre of the CAS, v. v. i.

Team: Division of innovation and adaptation techniques

Head: Ing. Červený Jan

Total number of outputs : 82

Evaluated outputs : 12 (0)

Outputs for bibliometry : 43

Large collaborations outputs: 0

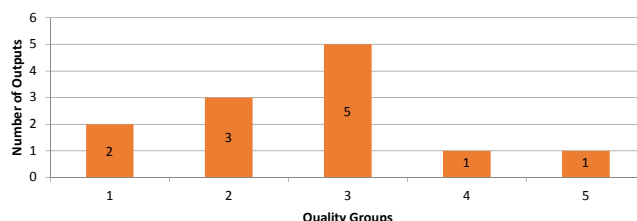
Quality Groups of Outputs (Results of the Phase I.)

Quality	1	2	3	4	5
Outputs	2	3	5	1	1

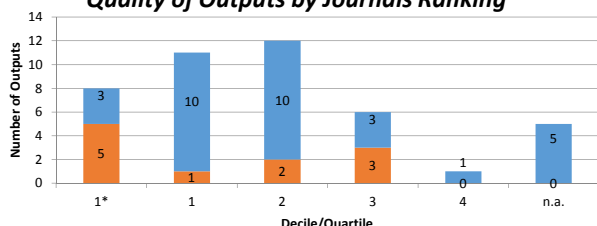
Quality Groups:

- (1): Quality that is **world-leading** in terms of originality, significance and rigour.
 (2): Quality that is **internationally excellent** in terms of originality, significance and rigour but which falls short of the highest standards of excellence.
 (3): Quality that is **recognized internationally** in terms of originality, significance and rigour.
 (4): Quality that is **recognized nationally** in terms of originality, significance and rigour.
 (5): Quality that falls **below the standard** of nationally recognized work. Or work which does not meet the published definition of research for the purposes of this assessment.

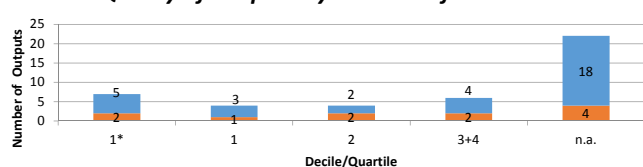
Quality Profile



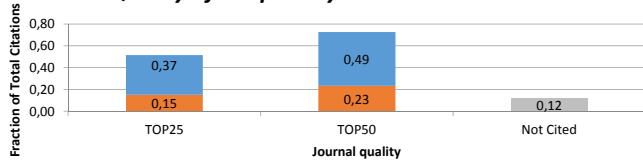
Quality of Outputs by Journals Ranking



Quality of Outputs by Number of Citations



Quality of Outputs by Citation Sources



Field Structure of Outputs

Field Structure of Outputs	Outputs
PLANT SCIENCES	12
ENVIRONMENTAL SCIENCES	4
FORESTRY	4
BIOTECHNOLOGY & APPLIED MICROBIOLOGY	4
BIOLOGY	3
MULTIDISCIPLINARY SCIENCES	3
BIOCHEMICAL RESEARCH METHODS	2
CHEMISTRY, ANALYTICAL	1
MARINE & FRESHWATER BIOLOGY	1
OPTICS	1
INSTRUMENTS & INSTRUMENTATION	1
BIOCHEMISTRY & MOLECULAR BIOLOGY	1
AGRONOMY	1
ECOLOGY	1
PHARMACOLOGY & PHARMACY	1
ENERGY & FUELS	1
AGRICULTURE, MULTIDISCIPLINARY	1
ENGINEERING, ELECTRICAL & ELECTRONIC	1

Total number of outputs: selected types of outputs published in 2010-2014 and registered in the institutional research information system: journal article, monograph, monograph chapter, proceedings paper, patent, utility model, industrial design, prototype, functional specimen, norms and directives, specialized map, realized certified methodology, software, pilot plant, verified technology, plant breed/variety.

Evaluated outputs: outputs submitted by the team and evaluated in the Phase I (value in the brackets shows number of outputs submitted by the team but not evaluated in the Phase I).

Outputs for bibliometry: publications in 2010-2014 with less than 30 authors registered in the Web of Science; document type: article, review or proceedings paper.

Large collaborations outputs: publications in 2010-2014 with more than 30 authors registered in the Web of Science; document type: article, review or proceedings paper.

Quality Profile: number of evaluated outputs vs quality groups (5 groups); 'world-leading' quality denotes an absolute standard of quality in each field and subfield; 'world leading', 'internationally' and 'nationally' in this context refer to quality standards; they do not refer to the nature or geographical scope of particular subjects, nor to the focus of research nor its place of dissemination; for example, research which is focused on the subject specific to the Czech Republic might be of 'world leading' standard, on the contrary, work with an international focus might not be of 'world leading, internationally excellent or internationally recognized' standard.

Quality of Outputs by Journals Ranking: number of outputs in top decile (1*) and quartiles (1-4) by AIS of journals; n. a. - outputs in journals without AIS; if the output is assigned to more than one field, the mean value of quartile is taken (values from 0,1 to 0,5 rounded down); orange: outputs submitted by the team to the Evaluation, blue: other outputs by the team.

Quality of Outputs by Number of Citations: number of outputs in the top decile (1*) and in quartiles (1, 2, 3+4) of the list of outputs ordered by the number of citations; n. a. - the number of outputs in the field is low and/or the number of citations is not sufficient for relevant judgement; if the output is assigned to more than one field, the mean value of quartile is taken (values from 0,1 to 0,5 rounded down); orange: outputs submitted by the team to the Evaluation, blue: other outputs by the team.

Quality of Outputs by Citation Sources: fraction of citations of all outputs in the top quartile (TOP25) or the top half (TOP50) of list of journals ordered by AIS; fraction of "not cited" outputs is added; orange: outputs submitted by the team to the Evaluation, blue: other outputs by the team.

Field Structure of Outputs: number of outputs of the team in different fields; if the output is assigned to more than one field, the field where the publication performs best (assessed by Quality of Outputs by Journals Ranking) is taken; the table shows up to 30 fields.